

# PATTERNS: BASIC ELEMENTS TO APPLY

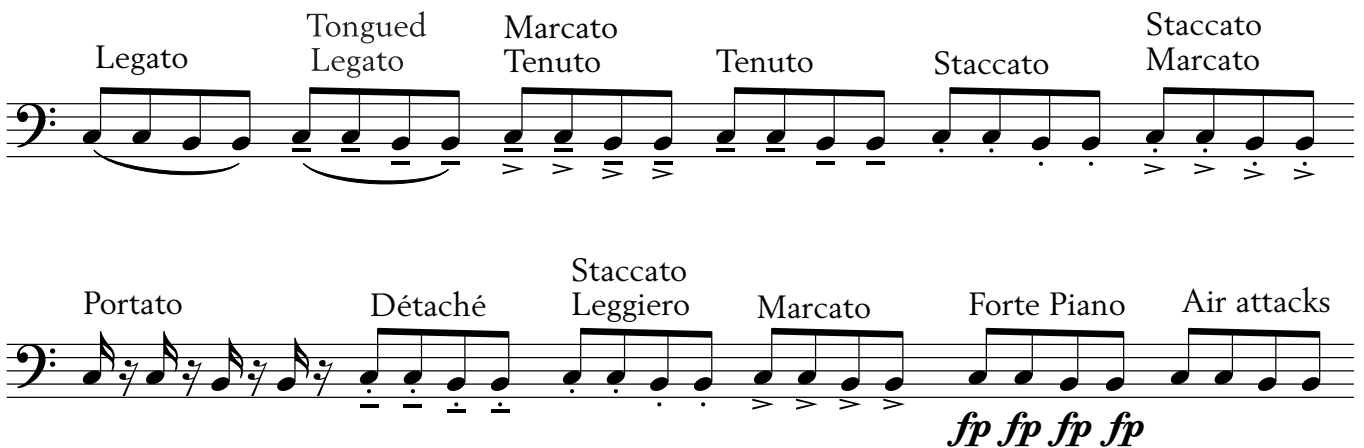
## SINGLE RHYTHMS TO APPLY



## COMBINED RHYTHMS



## ARTICULATIONS TO APPLY - TAKEN FROM "ROGER BOBO - MASTERING THE TUBA"



## DYNAMICS TO APPLY



And *cresc. decresc. sfz* etc.

## SOUND COLORS / STYLES

- dark / clear
- Bruckner style
- Stravinsky style
- etc. what you want to achieve

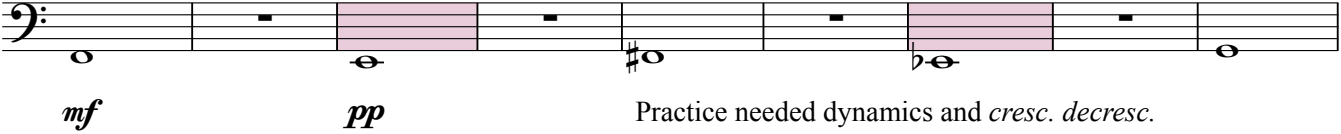
## AMBITUS / RANGE

- Practice on your full ambitus / range

## TEMPO

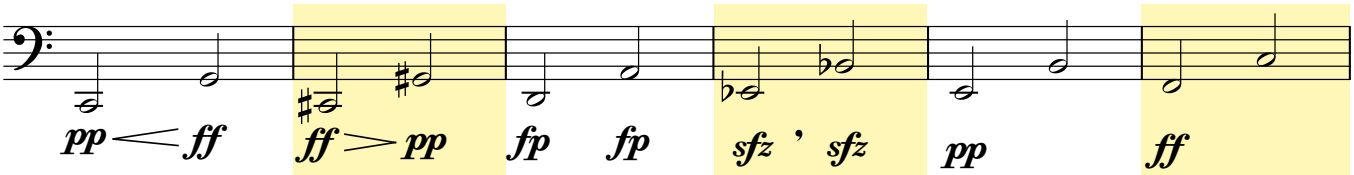
- Practice at different speed, keep things challenging, but with control.

CHAPTER 1 – DAILY PRACTICE

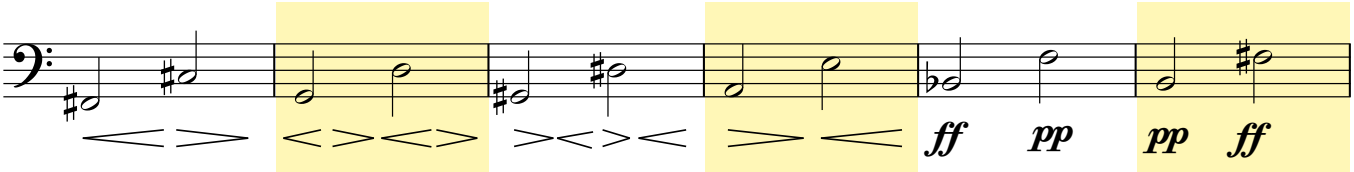


$mf$   $pp$  Practice needed dynamics and *cresc. decresc.*

CHAPTER 3 – LONG TONE INTERVALS SPECIFIC PATTERNS




$pp$   $\leftarrow ff$   $ff$   $\rightarrow pp$   $fp$   $fp$   $sfz$  '  $sfz$   $pp$   $ff$



$\leftarrow \rightleftarrows$   $\leftarrow \rightleftarrows \leftarrow \rightleftarrows$   $\rightleftarrows \leftarrow$   $\rightleftarrows \leftarrow$   $ff$   $pp$   $pp$   $ff$



$ff$   $pp$   $ff$   $pp$   $ff$   $pp$   $f$   $p$   $p$   $f$



$f$   $mf$   $mp$   $p$   $pp$   $p$   $mf$   $ff$

CHAPTER 2 – SCALE SPECIFIC PATTERNS

2 Up      3 Up      4 Up      5 Up      etc.

This block shows four measures of bass clef notation. The first measure is labeled '2 Up' and contains two eighth notes. The second measure is labeled '3 Up' and contains three eighth notes. The third measure is labeled '4 Up' and contains four eighth notes. The fourth measure is labeled '5 Up' and contains five eighth notes. The pattern continues with 'etc.'.

2 Down      3 Down      4 Down      5 Down      etc.

This block shows four measures of bass clef notation. The first measure is labeled '2 Down' and contains two eighth notes. The second measure is labeled '3 Down' and contains three eighth notes. The third measure is labeled '4 Down' and contains four eighth notes. The fourth measure is labeled '5 Down' and contains five eighth notes. The pattern continues with 'etc.'.

1 Up & Down      2 Up & Down      3 Up & Down      etc.

This block shows four measures of bass clef notation. The first measure is labeled '1 Up & Down' and contains two eighth notes. The second measure is labeled '2 Up & Down' and contains four eighth notes. The third measure is labeled '3 Up & Down' and contains six eighth notes. The pattern continues with 'etc.'.

1 Down & Up      2 Down & Up      3 Down & Up      etc.

This block shows four measures of bass clef notation. The first measure is labeled '1 Down & Up' and contains two eighth notes. The second measure is labeled '2 Down & Up' and contains four eighth notes. The third measure is labeled '3 Down & Up' and contains six eighth notes. The pattern continues with 'etc.'.

3 Up & Back (Clark)      4 Up & Back      5 Up & Back

This block shows three measures of bass clef notation. The first measure is labeled '3 Up & Back (Clark)' and contains six eighth notes. The second measure is labeled '4 Up & Back' and contains eight eighth notes. The third measure is labeled '5 Up & Back' and contains ten eighth notes.

3 Down & Back      4 Down & Back      5 Down & Back

This block shows three measures of bass clef notation. The first measure is labeled '3 Down & Back' and contains six eighth notes. The second measure is labeled '4 Down & Back' and contains eight eighth notes. The third measure is labeled '5 Down & Back' and contains ten eighth notes.

3rd up      4th up      5th up

This block shows three measures of bass clef notation. The first measure is labeled '3rd up' and contains six eighth notes. The second measure is labeled '4th up' and contains eight eighth notes. The third measure is labeled '5th up' and contains ten eighth notes.

6th up      7th up      8ve up

This block shows three measures of bass clef notation. The first measure is labeled '6th up' and contains six eighth notes. The second measure is labeled '7th up' and contains eight eighth notes. The third measure is labeled '8ve up' and contains ten eighth notes.

3rd down      4th down      5th down

This block shows three measures of bass clef notation. The first measure is labeled '3rd down' and contains six eighth notes. The second measure is labeled '4th down' and contains eight eighth notes. The third measure is labeled '5th down' and contains ten eighth notes.

6th down      7th down      8ve down

This block shows three measures of bass clef notation. The first measure is labeled '6th down' and contains six eighth notes. The second measure is labeled '7th down' and contains eight eighth notes. The third measure is labeled '8ve down' and contains ten eighth notes.

CHAPTER 3 – INTERVALS TECHNICAL SPESIFIC

Ex. 1&2 T - Practice in different dynamics and articulations

Musical notation for Exercise 1&2 T, bass clef. The exercise consists of three measures. The first measure contains two quarter notes (G2, A2) with a slur underneath. The second measure contains four quarter notes (B2, C3, D3, E3) with a slur underneath. The third measure contains eight eighth notes (F3, G3, A3, B3, C4, D4, E4, F4) with a slur underneath.

Ex. 3&4 T - Practice with different dynamics and articulations!

Musical notation for Exercise 3&4 T, bass clef. The exercise is divided into two systems of four measures each. The first system includes eighth notes, quarter notes, and a half note, with some measures highlighted in yellow. The second system features sixteenth notes and eighth notes, with some measures highlighted in yellow. The final measure of the second system contains three triplet markings over eighth notes.

Ex. 5&6 T. Practice with different dynamics and articulations!

Musical notation for Exercise 5&6 T, bass clef. The exercise is divided into two systems of five measures each. The first system features eighth notes and quarter notes, with some measures highlighted in pink. The second system includes eighth notes, quarter notes, and eighth-note triplets, with some measures highlighted in pink.